

Figure 02.2 Drawing area coordinate system.

Note Block

The note block is the module or modules within the drawing area where keynotes, general notes, and key plans are located. Not all sheets will have a note block. The note block is located in the far right column of the drawing area. A key plan block, when used, should always be located in the lowest module of the note block. Refer to *Figure 02.3*. If the sheet does not have a note block locate the key plan block in the lowest module next to the title block. Refer to *Figure 04.14* in the *Drafting Conventions* Module.

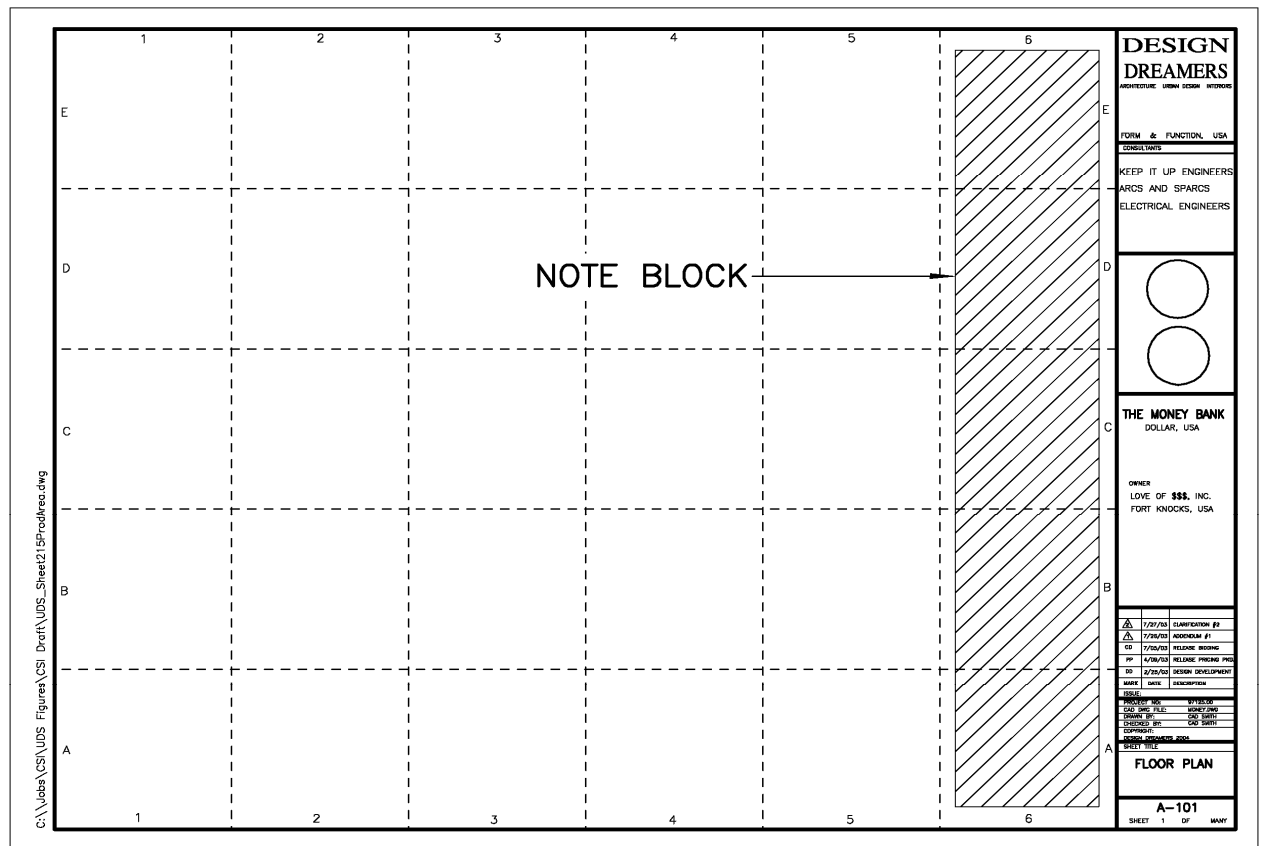


Figure 02.3 Note block.